



MARTIN GARDNER  
ARCHITECTURE



INDUSTRIAL | MANUFACTURING | WAREHOUSE

*Pictured: Freund-Vector Corporation*



# FIRM PROFILE

Martin Gardner Architecture P.C. has been providing **EXCELLENCE** in architecture, design, master planning, needs assessment, creative placemaking, and other consulting services in eastern Iowa for over **35 YEARS**. We have a dynamic Team between two offices with a wide-ranging portfolio of over **2,000 PROJECTS**.

We believe in strong and **VIBRANT COMMUNITIES** and building places in them that are meaningful, impactful, and resilient. As Community Architects it is our responsibility to advocate for your needs and work toward the success of your project. We go beyond the surface of the issues to discover and address the real challenges underlying any project to achieve positive results.

Building **TRUST** and meaningful relationships with our clients are the keys to our success. We believe in being easily accessible to our clients. We also enjoy traveling to our clients and spending time in the communities that we work in so that we remain

engaged, attentive, and responsive to your needs and goals. The best places and spaces are products of **COLLABORATION**, community input, and shared ideas. As design professionals, we value and depend on feedback from owners and project users to continually learn, better our practice, and improve our services. We listen and learn when we tackle a new design or renovation rather than coming in with a predetermined approach, style, or solution. We want our clients to be involved with the design process. We encourage **PARTICIPATION** by our clients and their communities, and we maintain this as our guiding principle throughout the entire design process.

It is important to us to design with purpose and to hold ourselves responsible for our clients' financial resources and to **STEWARD** the natural and built resources we have inherited. We believe that our clients projects deserve our utmost effort and that our clients will always be treated with respect and consideration at all times. Together we can achieve more, and together we can **MAKE GREAT THINGS** happen!

Pictured: Kalona Community Center



# FIRM PROFILE



*"Vector has worked with Martin Gardner on three projects over the last seven years. The projects include a new main conference room, 16,500 square foot manufacturing building addition and a building front/reception area re-modeling. All of the projects were managed very professionally. The conference room and building front re-model have received many compliments because of uniqueness in their design. Extra efforts were given to make sure we were satisfied during the duration of each project. Our satisfaction with Martin Gardner's extra effort and high quality of work would lead me to use them for future projects."*

Steve Jensen | Former President of Freund-Vector Corp. | Current Marion Council-member

# MEET OUR TEAM!



KYLE MARTIN, AIA, LEED AP  
PRESIDENT AND PRINCIPAL ARCHITECT



SARAH COLEMAN, AIA  
PROJECT ARCHITECT



BRIAN STARK  
SENIOR PROJECT MANAGER



MICHAEL LECLERE, AIA, LEED GA  
PROJECT ARCHITECT AND  
LANDSCAPE ASSOCIATE



BETHANY JORDAN, AIA  
PROJECT ARCHITECT



JUSTIN HOFF, SDA  
BUSINESS MANAGER



MARK MOINE, LEED AP  
SENIOR PROJECT MANAGER



MIKE TUCKER  
SENIOR PROJECT MANAGER  
AND BIM MANAGER



DEREK POWERS  
ARCHITECTURAL ASSOCIATE



CAITLYN HAYWARD, IIDA  
INTERIOR DESIGNER



MARTIN GARDNER  
ARCHITECTURE



## PROGRAMMING

Programming is the beginning of our design process. Defining your needs, goals, and vision of the project during this phase will make decision making much easier during the planning and building of your project. It will also help us to develop a realistic budget for your project. We'll ensure you think beyond your current needs and anticipate future needs as well, so you'll save time and money and avoid frustration down the road.



## SCHEMATIC DESIGN

In this visioning phase we create initial building floor plans, models, and elevations. At this stage your dreams and ideas start to come to life! Input from the entire team and your committee is used to develop this design and we then vet the design against the previous programming criteria. Initial budgets will be produced and prioritization is re-examined if needed.

## DESIGN DEVELOPMENT

Planning the building takes the previous ideas and concepts into a final form. While the visioning process is based upon practical needs, much refinement occurs after that phase is complete to make the building work. For example, heating and cooling systems, electrical service sizes, structural details all need to be explored and coordinated from an engineering and economics standpoint.

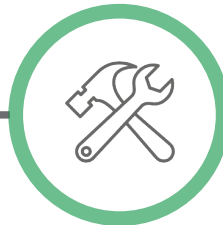


## CONSTRUCTION DOCUMENTS

Our intent at this phase of the project is to work closely with consultants to make the project as buildable and affordable as possible while maintaining project quality and performance. During this phase the earlier concepts and design development phases are combined into a set of detailed documents.

## CONSTRUCTION ADMINISTRATION

Beyond the development of the construction documents, we find that working with you throughout construction in a collaborative way helps the project run more smoothly with fewer delays and scheduling issues. In this phase we continue to work with all contractors and consultants to answer construction related questions, provide additional information and clarification when needed, process pay requests, and review project submittals essential to the project.





# ELEMENTS & APPROACH TO DESIGN

## SERVICE

MGA recognizes that a business's driving force is each employee's willingness to contribute and participate. By providing a central and convenient space for members to receive assistance, communities can be seen growing together as a unified entity.

## EFFICIENCY

Whether it be a maintenance building, utilities, factory, or an electrical cooperative, we make sure that our client's best interest is behind every decision we make. We are an experienced resource for energy efficient upgrades, renovations, planning for future expansion, and pursuing new facilities.

## CUSTOMER EXPERIENCE

Appealing to the consumer's needs and wants is the most effective way to build a positive reputation for any industry. Considering the customer experience from top to bottom and inside to outside ensures that our clients leave satisfied.

## STEWARDSHIP

Your work is an essential component for keeping your community afloat. We know that it is a heavy responsibility to make sure your services are readily available and functioning efficiently, and we will design with that same idea in mind.

## SAFETY

Our first priority in designing for your business is to create safe, stable, and healthy places for humans to work and utilize.

# INDUS

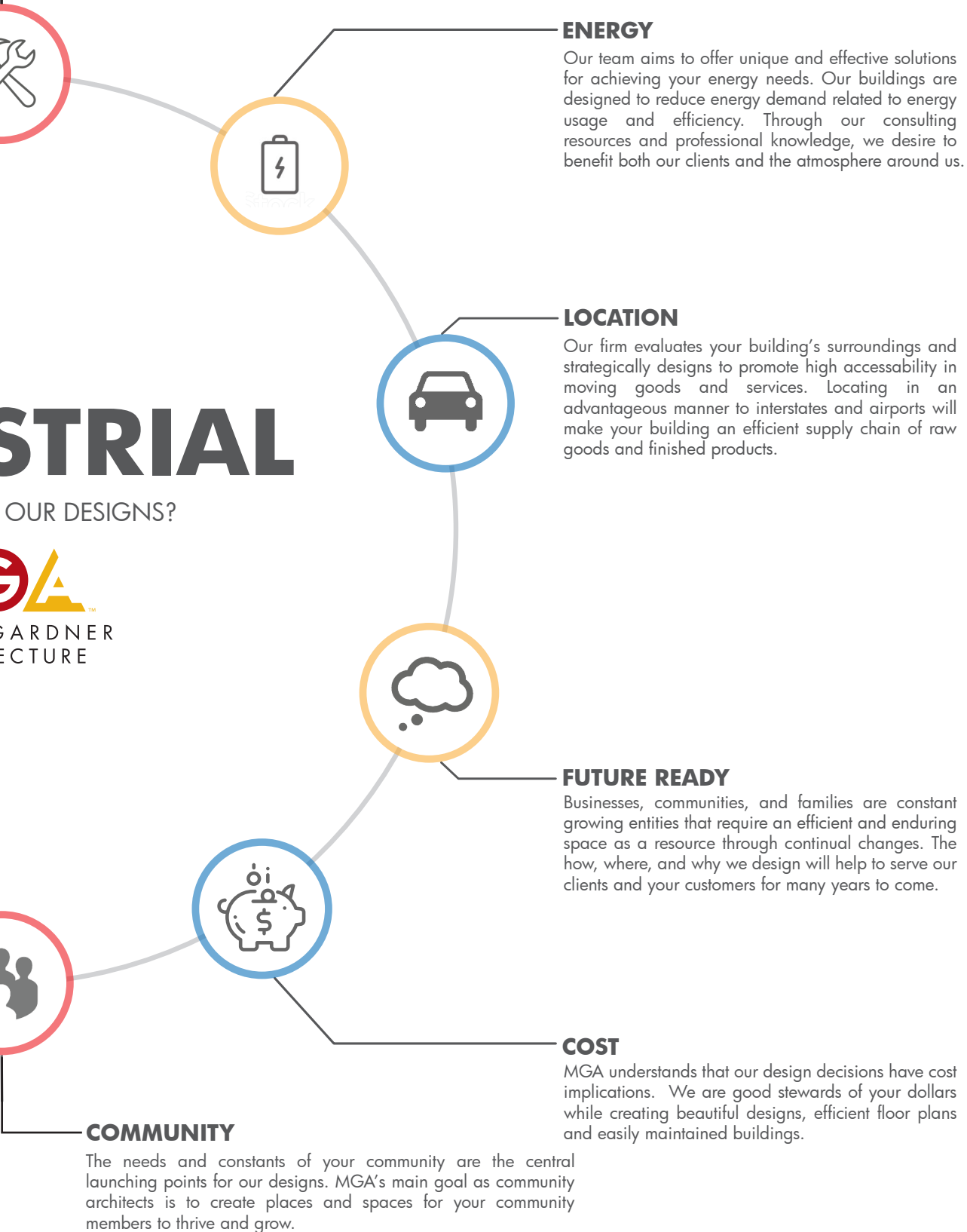
WHAT'S BEHIND



MARTIN G  
ARCHITE



# ELEMENTS & APPROACH TO DESIGN





# EASTERN IOWA LIGHT AND POWER

Renovation of a 52,000 SF former plastics plant into a new office, warehouse, and garage facility and a 12,000 SF addition to provide space for the larger trucks and trailers used by the field crews. The lower level of the two story office that was constructed inside the existing building houses a tornado shelter that protects the 24 hour dispatch center.

## REFERENCE

Eastern Iowa Light and Power

Kirk Trede | CEO

1705 W 3rd Street | Wilton | Iowa | 52778

P: (563) 732-2211





# EASTERN IOWA LIGHT AND POWER





# FREUND-VECTOR CORPORATION

Multiple projects for this long time international client including additions and renovations for their manufacturing processes, a new front office, laboratories, offices, conference rooms, break room, and storage spaces.

## REFERENCE

Freund-Vector Corporation

Hiroshi Nakayama | President & COO

675 44th Street | Marion | Iowa | 52302

P: (319) 377-8263





# FREUND-VECTOR CORPORATION





# D&S SHEETMETAL

New Building 24,000 square foot storage and fabrication shop building with a 5,200 square foot office and break area. This project delivery method was design-build.

## REFERENCE

D&S Sheetmetal

Valerie & Mark DeRycke, Owners

5805 Locust Road SW | Cedar Rapids | Iowa | 52404

P: (319) 362-2472









# ALLAMAKEE-CLAYTON RURAL ELECTRIC COOPERATIVE

New 50,000 square foot office, warehouse, wash bay, and vehicle storage building with pole yard.

## REFERENCE

Allamakee-Clayton Rural Electric Cooperative  
229 Highway 51 | Postville | Iowa | 52162  
P: (563) 864-7611





# ALLAMAKEE-CLAYTON RURAL ELECTRIC COOPERATIVE





# LINN COUNTY RURAL ELECTRIC COOPERATIVE

Multiple projects for this long time client totaling over 100,000 SF of new buildings, additions, and renovations for their locations in Marion and North Liberty. Projects have included their new headquarters office, multiple heated and unheated vehicle maintenance, wash bays, and storage buildings.

## REFERENCE

Eastern Iowa Light and Power

Kirk Trede | CEO

1705 W 3rd Street | Wilton | Iowa | 52778

P: (563) 732-2211





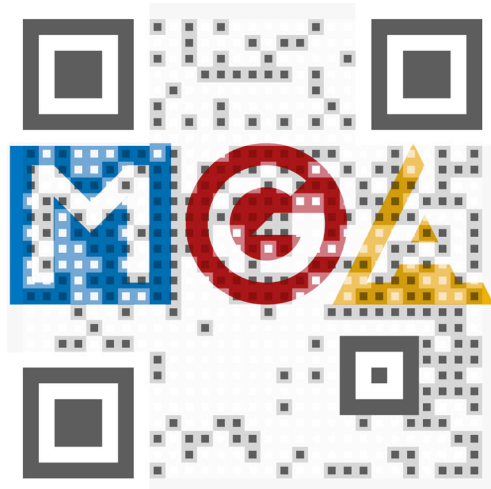
# WEST DELAWARE COUNTY CSD BUS BARN

New 7,800 square foot bus barn. This project included a pre-engineered building with three maintenance bays, wash bay, offices, break room, parts storage, storage mezzanine spaces, restrooms and mechanical spaces. Jib crane installations were into the design. HVAC systems included radiant in-floor heat and full ventilation systems with LED lighting.

## REFERENCE

West Delaware County Community School District  
Ron Swartz | Director of Buildings, Grounds & Transportation  
701 New Street | Manchester | Iowa | 52057  
P: (563) 927-3515





Scan this QR code with the camera on  
our phone to visit us on the web at:  
[www.MartinGardnerArch.com](http://www.MartinGardnerArch.com)